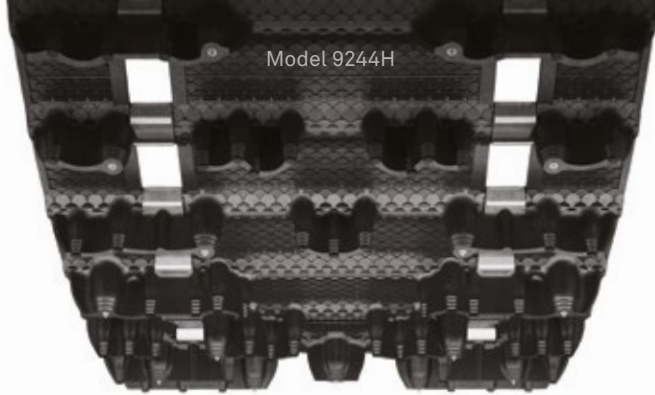


Model 9244H



## CAMSO

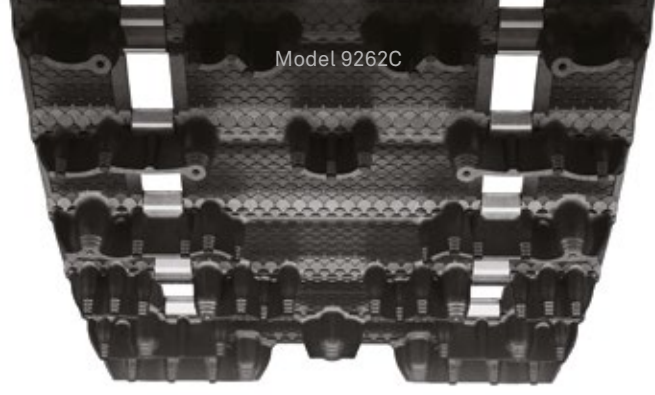
## ICE Cobra 1.6

Hard grip in soft snow

The "Denis Courtemanche Special Edition," in honor of long-time recreational products director who has devoted 50 years to improving snowmobile track design. Factory pre-studded with 1.6" lugs for excellent all-round performance, especially on ungroomed trails.

- Cupped lugs for superior acceleration and braking in loose, soft snow conditions
- Flexible lug design for superior off-trail performance

Model 9262C



## CAMSO

## Cobra 1.6

Performance, on or off the trail

The Cobra design taken to another level. Excellent performance on the soft, loose snow of ungroomed trails, now available in a 1.6" lug height for even better traction and performance while on/off-trail.

- Cupped lugs for superior acceleration and braking in loose, soft snow conditions
- Flexible lug design for superior off-trail performance
- Designed for factory pre-studded, select lugs are more rigid for traction on hard-packed snow performance

MODEL	DIMENSIONS	LUG HEIGHT	WEIGHT	DRIVE PITCH	NB. STUDS	CLIP CONFIG.	MODEL	DIMENSIONS	LUG HEIGHT	WEIGHT	DRIVE PITCH	CLIP CONFIG.
9244C	15" x 120" (38 cm x 305 cm)	1.6" (43 mm)	38 lb. (17.25 kg)	2.86" (73 mm)	91	Full ▲ ■	9262C	15" x 120" (38 cm x 305 cm)	1.6" (43 mm)	38 lb. (17.25 kg)	2.86" (73 mm)	Full ■
9245C	15" x 129" (38 cm x 328 cm)	1.6" (43 mm)	41 lb. (18.5 kg)	2.86" (73 mm)	97	Full ▲ ■	9264C	15" x 137" (38 cm x 348 cm)	1.6" (43 mm)	43 lb. (19.5 kg)	2.86" (73 mm)	Full ■
9246C	15" x 137" (38 cm x 348 cm)	1.6" (43 mm)	43 lb. (19.5 kg)	2.86" (73 mm)	104	Full ▲ ■	9282C	16" x 154" (41 cm x 391 cm)	1.6" (43 mm)	50 lb. (22.75 kg)	2.86" (73 mm)	Full ■
9247C	15" x 146" (38 cm x 371 cm)	1.6" (43 mm)	46 lb. (20.9 kg)	2.86" (73 mm)	110	Full ▲ ■	9291C	15" x 120" (38 cm x 305 cm)	1.6" (43 mm)	39 lb. (17.75 kg)	2.86" (73 mm)	Full
9249C	16" x 137" (41 cm x 348 cm)	1.6" (43 mm)	45 lb. (20.75 kg)	2.86" (73 mm)	104	Full ▲ ■	9292C	15" x 129" (38 cm x 328 cm)	1.6" (43 mm)	41 lb. (18.5 kg)	2.86" (73 mm)	Full
9250C	16" x 146" (41 cm x 371 cm)	1.6" (43 mm)	48 lb. (21.8 kg)	2.86" (73 mm)	110	Full ▲ ■	9316C	15" x 144" (38 cm x 366 cm)	1.6" (43 mm)	49.5 lb. (22.5 kg)	2.52" (64 mm)	Full
9272C	16" x 154" (41 cm x 391 cm)	1.6" (43 mm)	50 lb. (22.5 kg)	2.86" (73 mm)	117	Full ▲ ■						
9273C <sup>1</sup>	15" x 154" (38 cm x 391 cm)	1.6" (43 mm)	47 lb. (21.25 kg)	2.86" (73 mm)	117	Full ▲ ■						
9312C	15" x 121" (38 cm x 307 cm)	1.6" (43 mm)	42 lb. (19.1 kg)	2.52" (64 mm)	104	Full ▲						
9313C	15" x 128" (38 cm x 325 cm)	1.6" (43 mm)	44.5 lb. (20.2 kg)	2.52" (64 mm)	110	Full ▲						
9314C	15" x 136" (38 cm x 345 cm)	1.6" (43 mm)	47 lb. (21.3 kg)	2.52" (64 mm)	117	Full ▲						
9315C	15" x 144" (38 cm x 366 cm)	1.6" (43 mm)	50 lb. (22.7 kg)	2.52" (64 mm)	123	Full ▲						

<sup>1</sup> These track models feature center hole for third driver.

▲ Embedded sharp tip lug studs ■ Single-ply construction ● Enhanced stud easy tracks