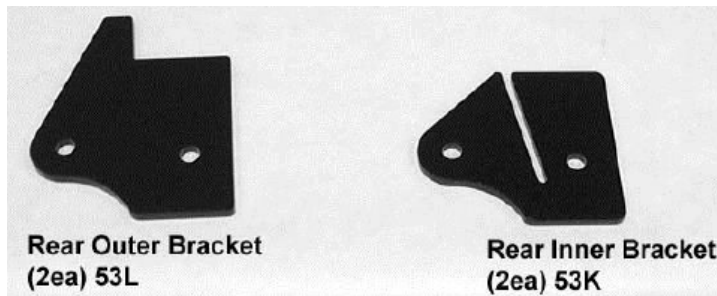
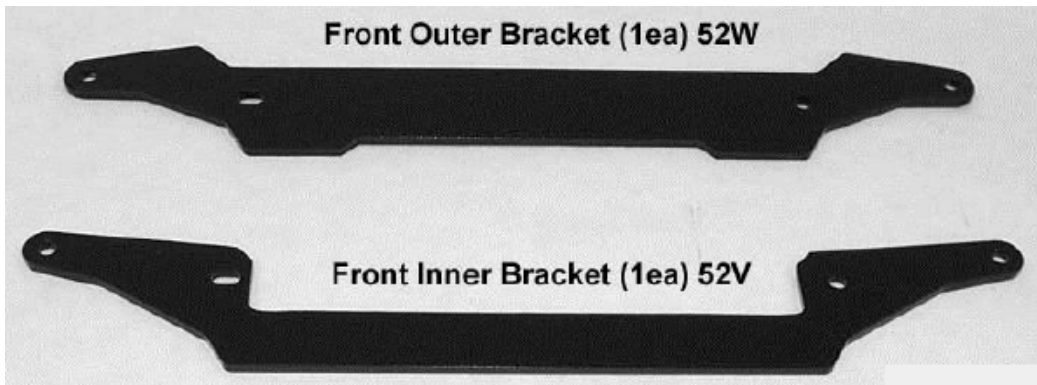




INSTALLATION INSTRUCTIONS

LK-P-GEN-1K

Parts Diagrams



Read instructions and view illustrations before beginning.

Liability Statement

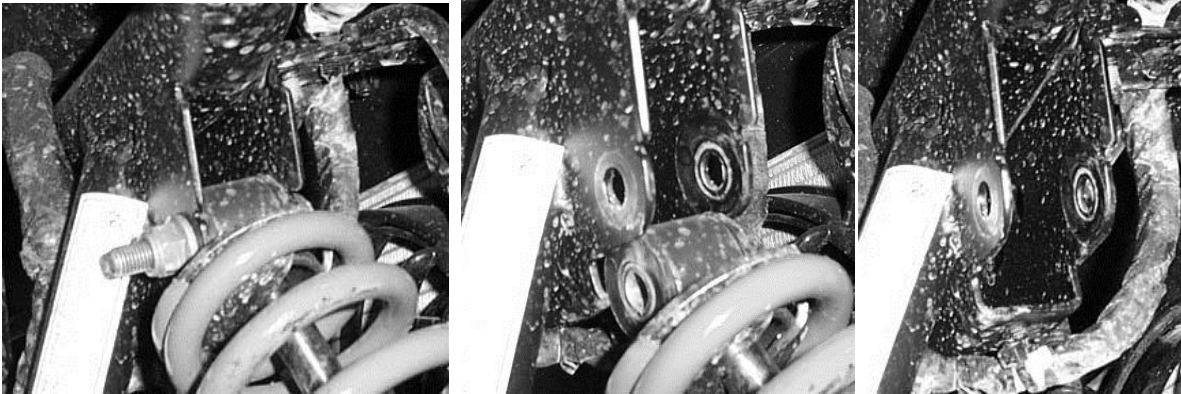
This product is designed for use on ATVs and/or RUVs to increase ground clearance and fender clearance. It is designed for utility type, slow-speed use on relatively flat terrain in deep mud or snow. Purchasers should be aware that use of this product may increase the frequency of required maintenance, part wear, and will raise the center of gravity on your ATV and/or RUV, increasing risk of roll-over, injury and death on all types of terrain. It is your responsibility to always inform other operators and passengers of this vehicle about the added risks.

We recommend that wider tires and/or wheel spacers be used to achieve a wider stance and to improve stability of the ATV and/or RUV. Riders should be advised that the handling characteristics of a taller ATV and/or RUV are different and require extra care when riding, particularly on side hills or off-camber situations. If you further raise the center of gravity by adding taller tires, heavy loads to racks or seats, or by any other means, the ATV and/or RUV must be operated with even more care, at slower speeds and on relatively flat ground. All turns should be done at a slow speed, even on level ground.

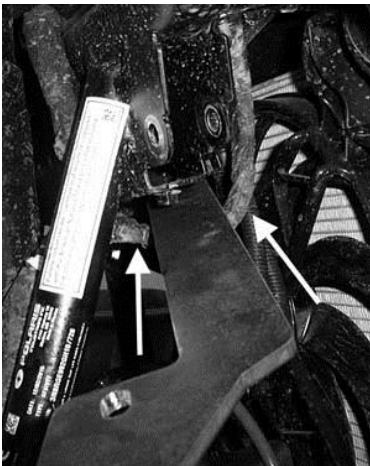
If this product is not what you expected, or is not consistent with your intended use, you should return the product immediately to the seller, before installation, for a refund of the purchase price; less any fees. After installation, product is warranted for 90 days for defects in workmanship and materials. Warranty is limited to refund of the purchase price or replacement of the kit, at the seller's option.

Front Lift Installation

1. Place transmission in park. Place jack under center of front end and lift until front wheels clear the ground. Be careful to properly secure and support so that A-arms and shocks can droop to full extension.
2. Remove front wheels.
3. Disconnect the top of the front shocks.



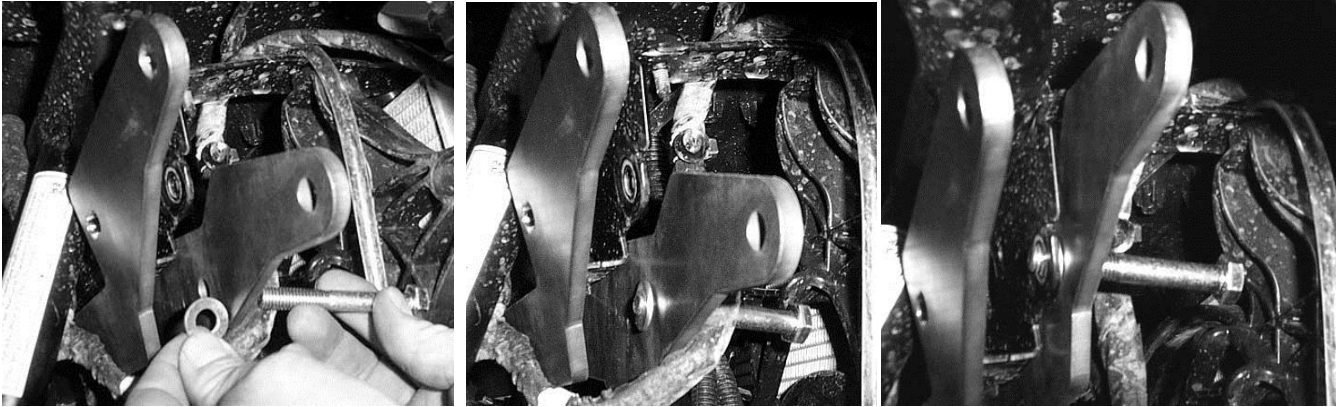
4. There is a frame cross member that runs between the two shocks. Connected to this cross member are several wires, wiring harness and vent tub. You need to disconnect the clips that attach the wires to the cross member and relocate the vent tube. The lift brackets will be mounted on either side of the cross member and you need to clearance the wires so you can attach the brackets.
5. Once you have moved the wires you need to insert the front lift brackets into the frame. There is a front inner bracket and a front outer bracket.
6. Insert the front inner bracket in to the frame running it to the outside and rear of the shock mount tabs.



7. Next insert the front outer bracket to the outside and to the front of the shock mount tabs.



8. Insert the 10 x 70mm bolt through the front outer bracket, placing a 10mm washer between the bracket and the shock mount.



9. Next insert **Spacer O** in the stock shock mount position and push the 10x70mm bolt through.

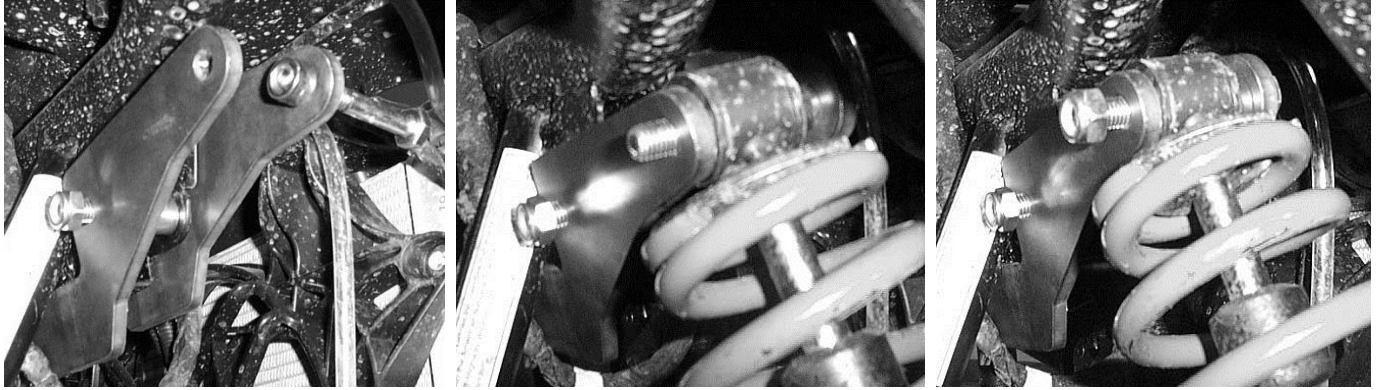


10. Place another washer between the shock tab and the front inner bracket and secure the bracket loosely with a 10mm lock nut.



11. Repeat steps at this time for the opposite side.

12. Connect the top of the shock to the lift plates. Insert the 10 x 70mm hex bolt through from the front rearward. Place a small **Spacer JJ** between the shock eyelet and the lift plate. Fasten it tight using a 10mm lock nut provided.



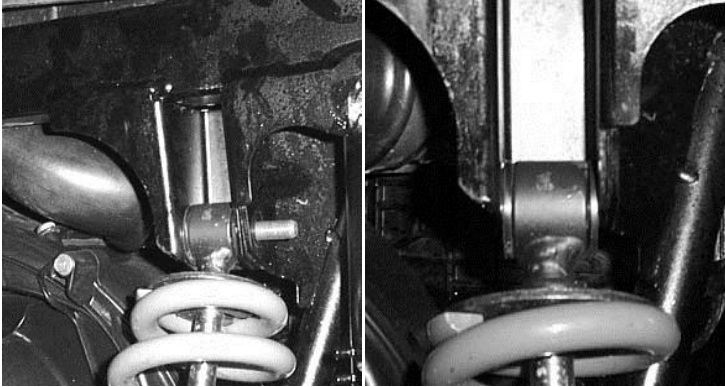
13. Repeat steps for the opposite side and tighten all nuts tight at this time.

14. Place wheels back on the UTV, torque all lugs to factory specifications.

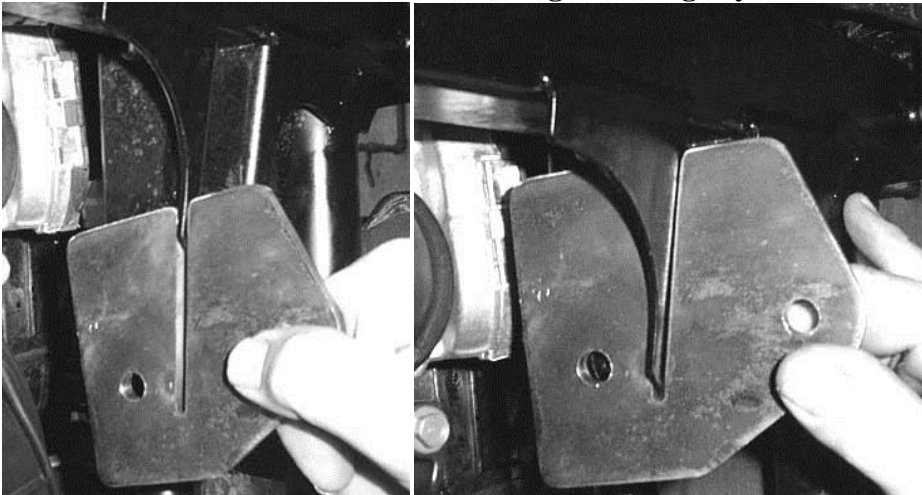
NOTE: Double check all bolts to verify they are tight. Loose bolts come off and can cause a crash and serious injury or death.

Rear Lift Installation

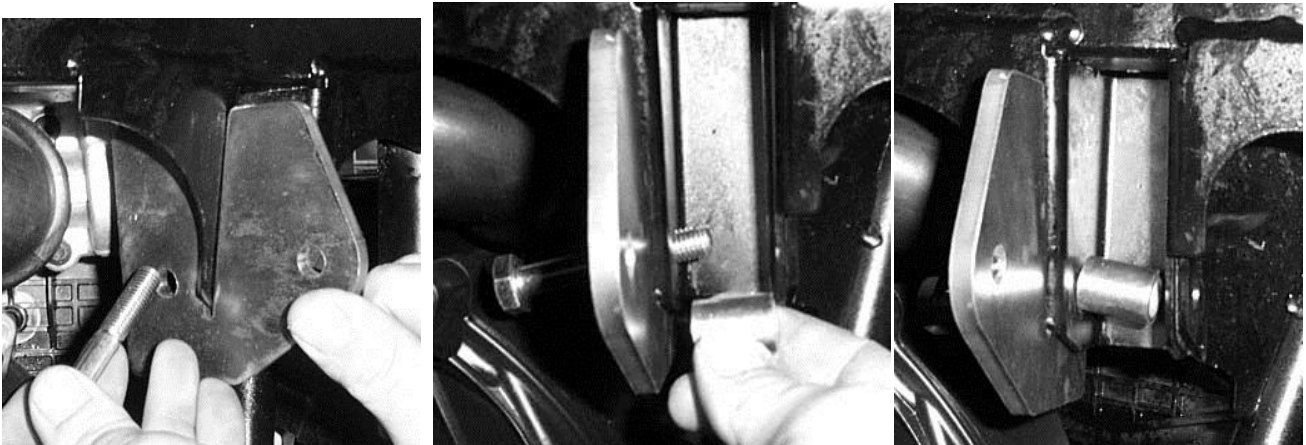
1. Place UTV transmission in park. Lift the rear of the UTV until the rear arms drop to full extension and tires leave the ground.
2. You will need to remove the rear wheels
3. Disconnect the top of the rear shock from the shock tabs.



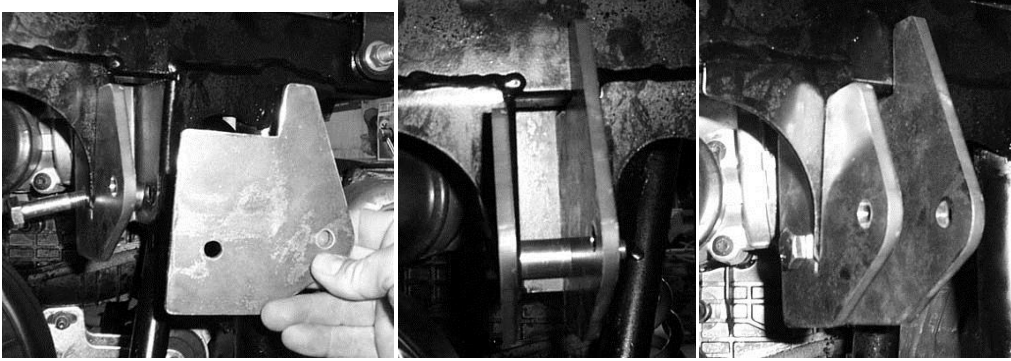
4. Starting from the driver's side rear, insert the inner bracket into place to the front and outside the shock mount tab. It will "hook" the frame. **(Images are slightly different than finished part)**



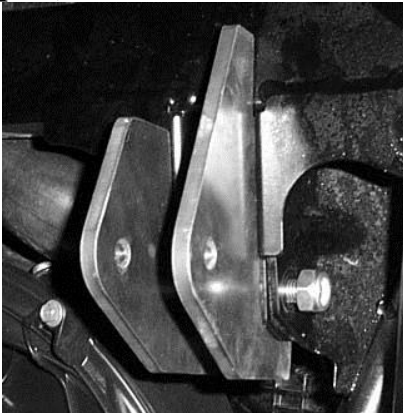
5. Insert into the bracket a 10mm x 60mm bolt and into the shock mount hole. Place a 39C spacer onto the bolt.



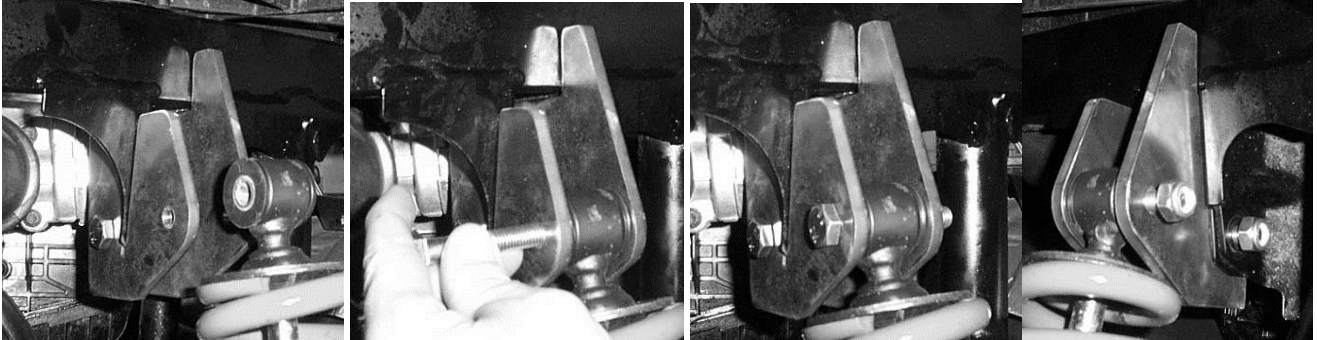
6. Insert the rear outer lift bracket. It will go to the inside of the shock mount tab. Push the bolt all the way through. **(Images are slightly different than finished part)**



7. Loosely connect the brackets in place with a 10mm lock nut. **(Images are slightly different than finished part)**



8. Connect the top of the shock to the brackets using the 10x60mm bolt and 10mm lock nut.



(Images are slightly different than finished part)

9. Tighten all nuts and bolts.

10. Repeat steps for opposite side.

11. Place wheels back on the UTV, torque all lugs to factory specifications.

