



● Thank you for purchasing our product. Before installing/operating the product, please read the instructions thoroughly and retain them for future reference.

## ⚠ Attention!

1. For installation, please follow the steps described. Any damage caused by wrong installation shall be imputed to the users.
2. Do not disassemble or change any parts.
3. Opening the instrument will void any warranty. Maintenance or repair should be executed by our professionals only.
4. Don't break or modify the wire. To avoid the short circuit, please don't pull the wire when installing.

### © SYMBOL DESCRIPTION:

**NOTE** The symbols indicate additional instructions.

⚠ Some procedures must be followed to avoid damages to the instrument.

⚠ **WARNING!** Certain procedure must be followed to avoid damages to yourself, to the vehicle or the public.



PRESS THE  
BUTTON  
ONCE



PRESS THE  
BUTTON 3  
SECONDS



PRESS THE  
BUTTON 6  
SECONDS



FLASH

## 1-1 Accessories

<b>1</b> LCD meter X1	<b>2</b> Meter cover X1	<b>3</b> Temp sensor wire X1	<b>4</b> Power wire X1	<b>5</b> M3 X L20 screw X2(A) M3 X P0.5 nut X2(B)
<b>6</b> Velcro X1 set	<b>7</b> Infrared temp sensor X1	<b>8</b> Bolted cover X1	<b>9</b> M2x5LxP0.4 screw X6(A) M3X5XP0.5 screw X2(B)	<b>10</b> 1.3 mm Allen key X1

**NOTE** Contact your local distributor, if the items received in the box are not the same as the items listed above.

## 2-1 Wiring Installation Instructions

Main switch wiring reference:

	Power	Key on	Ground
YAMAHA	Red	Brown	Black
HONDA	Red	Red / Black	Green
SUZUKI		Black	Green
KAWASAKI	White	Brown	Black / Yellow
KYMKO	Red	Black	Green
SYM	Red	Black	Green
PGO	Red / White	Orange	Black

**NOTE** The color listed above may differ depending on the model.

Red / "+" Wire connect key on DC 12V main power switch

Mid-way connector

Black / Ground wire connect to the vehicle body or the engine. (it must be a good ground)

Power wire(Accessory 4)

Temp sensor wire(Accessory 3)

Infrared temp sensor(Accessory 7)

LCD meter(Accessory 1)

## 2-2 Installation Instructions

Follow the steps below during installation.

**A** 1. LCD meter(Accessory 1)  
2. M3 X L20 screw(Accessory 5-A)  
3. M3 X P0.5 nut(Accessory 5-B)  
4. Meter cover(Accessory 2)

**B** 1. LCD meter(Accessory 1)  
2. Meter cover(Accessory 2)  
3. Velcro-male(Accessory 6)  
4. Velcro-female(Accessory 6)

**NOTE** Choose either Method A or B according to your need.

## 2-3 Infrared Temp Sensor Installation Instructions

**A** (May install in the front and the back)

**B** (May install in the right and the left.)

Follow the steps below during installation.

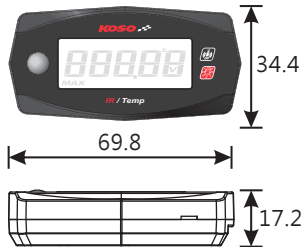
**A** 1. Infrared temp sensor(Accessory 7)  
2. Bolted cover(Accessory 8)  
3. M2x5LxP0.4 screw(Accessory 9-A)

**B** 1. Infrared temp sensor(Accessory 7)  
2. M3X5XP0.5 screw(Accessory 9-B)

**NOTE** Choose either Method A or B according to your need.

⚠ The screw hole concaves are the fixing place for the bolted cover(Accessory 8).

### 3 Functions, Settings Description



● Temperature	Display range : -4.0 ~ 302.0 °F, Display unit : 0.1 °F
● Temperature warning	Setting range : 140 ~ 302 °F, Setting unit : 1 °F
● Volt meter	Display range : 8.0 v ~ 18.0 v , Display unit : 0.1 v
● Effective voltage	DC 12V
● Effective temperature range	-10 ~ 60 °C
● Water-Proof Standard	JIS D 0203
● Meter size	W69.8 X L34.4 X H17.2 mm
● Meter weight	About 47.5 g

**NOTE** Design and specifications are subject to change without notice!

### 4-1 Display Switching Instruction



- In the temperature display screen, **press the button once** to enter the voltage screen.

- When not connected to the Temp sensor, the screen would show ---.°F °

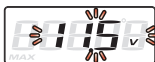


- When the temperature > temperature warning value, the value should blink.



- In the voltage screen, **press the button once** to enter the Max. temperature record screen.

- When the voltage  $\leq 11.5$  V, the value should blink.



- When the voltage  $\geq 15.5$  V, the value should blink.



- In the Max. temperature record screen, **press the button once** to go back to the temperature display screen.

- **Press and hold the button for 3 seconds** to reset the Max. temperature record and return temperature display screen.



- Back to temperature display screen.

### 4-2 Brightness Switching Instruction



- In the temperature display screen, **press and hold the button for 3 seconds** to switch brightness.



**NOTE** Setting range : Full brightness, half brightness.  
Default value : Full brightness

### 4-3 Temperature Warning Settings



- In temperature display screen, **press and hold the button for 6 seconds** to enter the temperature warning settings screen.



- Example : To set the temperature warning settings to 185 °C.
- Press and hold the button for 3 seconds to move to the digit you want to set.

**NOTE** Setting range : 140 ~ 302 °F  
Default value : 194 °F



- Press the button once to choose the setting number.



- EX : Set temperature warning value from 194 °F to 185 °F.
- Press and hold the button for 3 seconds to go back to the temperature display screen.

**NOTE** If no operation is made within 5 seconds, the setting will be automatically recorded and the screen will return to the temperature display screen.



- Back to temperature display screen.

### 5 Trouble Shooting

The following situation does not necessary indicate malfunction of the device. Please check the following points, before taking it in for maintenance.

Trouble	Check item	Trouble	Check item
Meter does not display or display error.	● Maybe poor connection of the sensor. → Make sure the sensor is connected correctly.	Temperature does not display or display error.	● Maybe poor connection of the harness. → Make sure the wires are connected correctly.



● Thank you for purchasing our product. Before installing/operating the product, please read the instructions thoroughly and retain them for future reference.

## ⚠ Attention!

1. For installation, please follow the steps described. Any damage caused by wrong installation shall be imputed to the users.
2. Do not disassemble or change any parts.
3. Opening the instrument will void any warranty. Maintenance or repair should be executed by our professionals only.
4. Don't break or modify the wire. To avoid the short circuit, please don't pull the wire when installing.

### © SYMBOL DESCRIPTION:

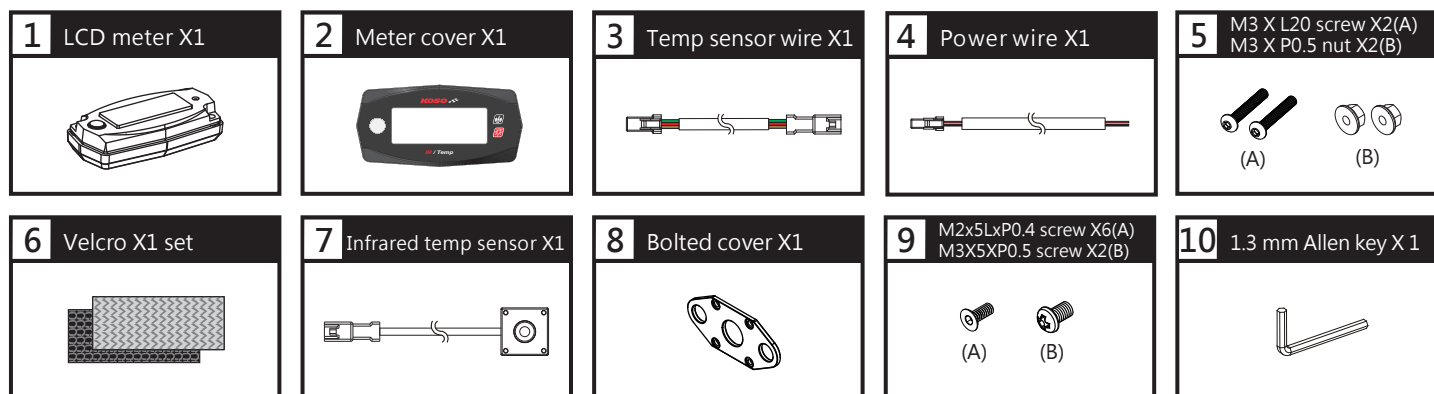
**NOTE** The symbols indicate additional instructions.

⚠ Some procedures must be followed to avoid damages to the instrument.

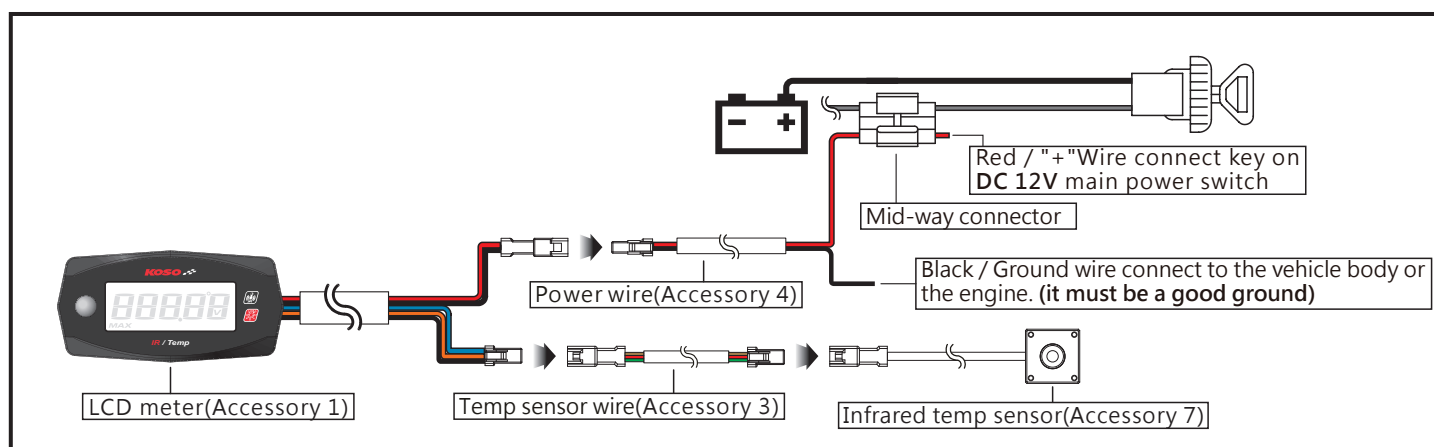
⚠ **WARNING!** Certain procedure must be followed to avoid damages to yourself, to the vehicle or the public.



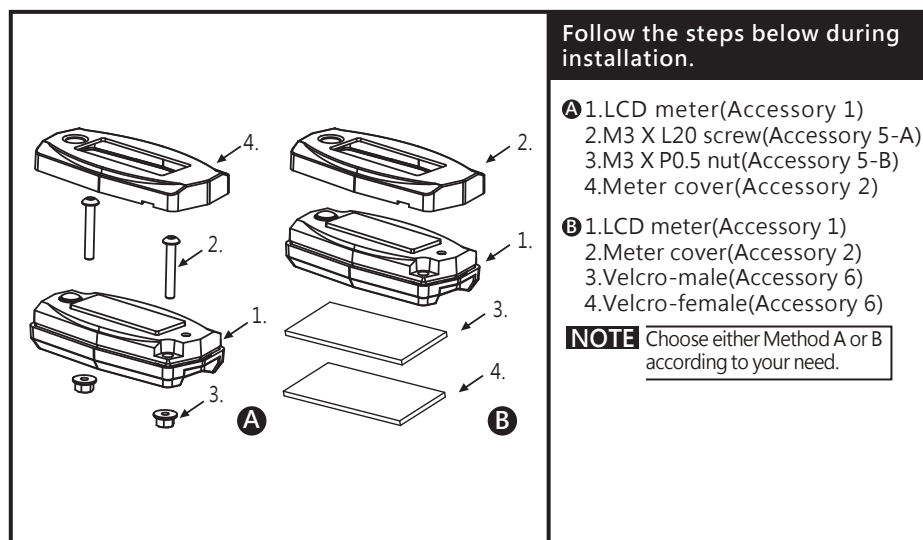
## 1-1 Accessories



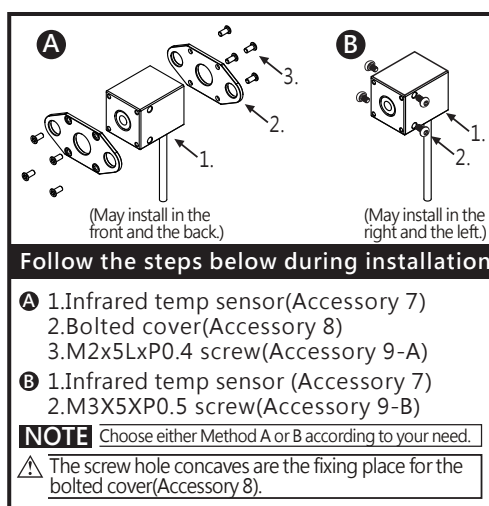
## 2-1 Wiring Installation Instructions



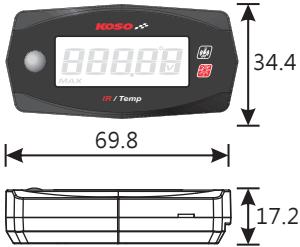
## 2-2 Installation Instructions



## 2-3 Infrared Temp Sensor Installation Instructions



### 3 Functions, Settings Description



● Temperature	Display range : -4.0 ~ 302.0 °F, Display unit : 0.1 °F
● Temperature warning	Setting range : 140 ~ 302 °F, Setting unit : 1 °F
● Volt meter	Display range : 8.0 v ~ 18.0 v , Display unit : 0.1 v
● Effective voltage	DC 12V
● Effective temperature range	-10 ~ 60 °C
● Water-Proof Standard	JIS D 0203
● Meter size	W69.8 X L34.4 X H17.2 mm
● Meter weight	About 47.5 g

**NOTE** Design and specifications are subject to change without notice!

### 4-1 Display Switching Instruction

- In the temperature display screen, **press the button once** to enter the voltage screen.

- When not connected to the Temp sensor, the screen would show ---.°F °

- When the temperature > temperature warning value, the value should blink.

- In the voltage screen, **press the button once** to enter the Max. temperature record screen.
- When the voltage ≤ 11.5 V, the value should blink.

- When the voltage ≥ 11.5 V, the value should blink.

- In the Max. temperature record screen, **press the button once** to go back to the temperature display screen.
- **Press and hold the button for 3 seconds** to reset the Max. temperature record and return temperature display screen.

- Back to temperature display screen.

### 4-2 Brightness Switching Instruction

- In the temperature display screen, **press and hold the button for 3 seconds** to switch brightness.

**NOTE** Setting range : Full brightness, half brightness.  
Default value : Full brightness

### 4-3 Temperature Warning Settings

- In temperature display screen, **press and hold the button for 6 seconds** to enter the temperature warning settings screen.

- Example : To set the temperature warning settings to 185 °C.
- Press and hold the button for 3 seconds to move to the digit you want to set.

**NOTE** Setting range : 140 ~ 302 °F  
Default value : 194 °F

- Press the button once to choose the setting number.

- EX : Set temperature warning value from 194 °F to 185 °F.
- **Press and hold the button for 3 seconds** to go back to the temperature display screen.

**NOTE** If no operation is made within 5 seconds, the setting will be automatically recorded and the screen will return to the temperature display screen.

- Back to temperature display screen.

### 5 Trouble Shooting

The following situation does not necessary indicate malfunction of the device. Please check the following points, before taking it in for maintenance.

Trouble	Check item	Trouble	Check item
Meter does not display or display error.	● Maybe poor connection of the sensor. → Make sure the sensor is connected correctly.	Temperature does not display or display error.	● Maybe poor connection of the harness. → Make sure the wires are connected correctly.



● Thank you for purchasing our product. Before installing/operating the product, please read the instructions thoroughly and retain them for future reference.

## ⚠ Attention!

1. For installation, please follow the steps described. Any damage caused by wrong installation shall be imputed to the users.
2. Do not disassemble or change any parts.
3. Opening the instrument will void any warranty. Maintenance or repair should be executed by our professionals only.
4. Don't break or modify the wire. To avoid the short circuit, please don't pull the wire when installing.

### © SYMBOL DESCRIPTION:

**NOTE** The symbols indicate additional instructions.

⚠ Some procedures must be followed to avoid damages to the instrument.

⚠ **WARNING!** Certain procedure must be followed to avoid damages to yourself, to the vehicle or the public.



PRESS THE  
BUTTON  
ONCE



PRESS THE  
BUTTON 3  
SECONDS



PRESS THE  
BUTTON 6  
SECONDS

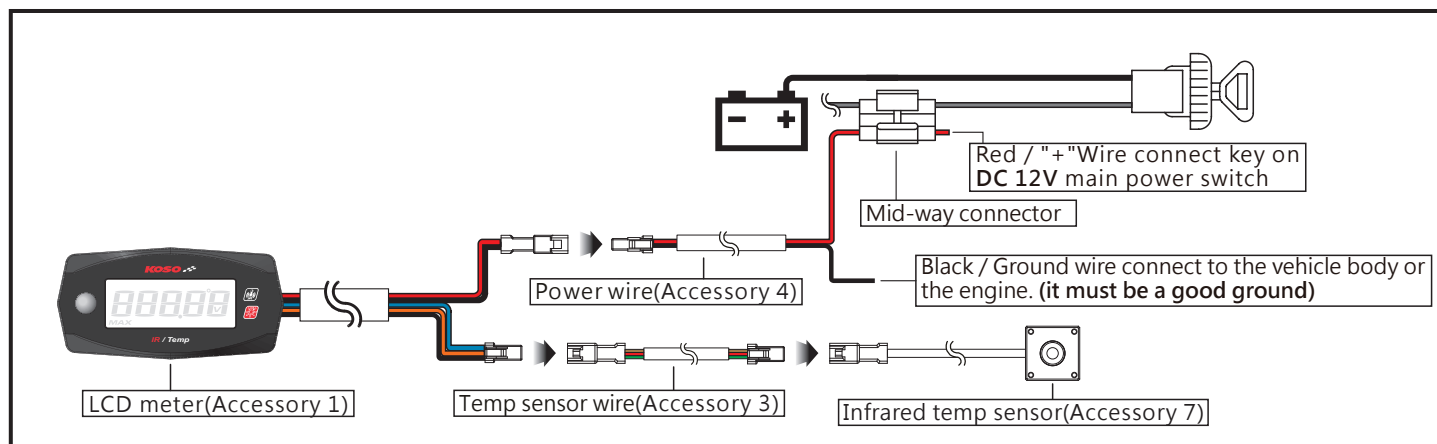


FLASH

## 1-1 Accessories

<b>1</b> LCD meter X1 	<b>2</b> Meter cover X1 	<b>3</b> Temp sensor wire X1 	<b>4</b> Power wire X1 	<b>5</b> M3 X L20 screw X2(A) M3 X P0.5 nut X2(B) 
<b>6</b> Velcro X1 set 	<b>7</b> Infrared temp sensor X1 	<b>8</b> Bolted cover X1 	<b>9</b> M2x5LxP0.4 screw X6(A) M3X5XP0.5 screw X2(B) 	<b>10</b> 1.3 mm Allen key X 1 

## 2-1 Wiring Installation Instructions



## 2-2 Installation Instructions

Follow the steps below during installation.

**A** 1. LCD meter (Accessory 1)  
2. M3 X L20 screw (Accessory 5-A)  
3. M3 X P0.5 nut (Accessory 5-B)  
4. Meter cover (Accessory 2)

**B** 1. LCD meter (Accessory 1)  
2. Meter cover (Accessory 2)  
3. Velcro-male (Accessory 6)  
4. Velcro-female (Accessory 6)

**NOTE** Choose either Method A or B according to your need.

## 2-3 Infrared Temp Sensor Installation Instructions

**A**

(May install in the front and the back)

**B**

(May install in the right and the left.)

Follow the steps below during installation.

**A** 1. Infrared temp sensor (Accessory 7)  
2. Bolted cover (Accessory 8)  
3. M2x5LxP0.4 screw (Accessory 9-A)

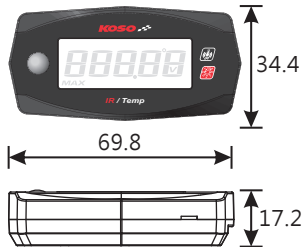
**B** 1. Infrared temp sensor (Accessory 7)  
2. M3X5XP0.5 screw (Accessory 9-B)

**NOTE** Choose either Method A or B according to your need.

⚠ The screw hole concaves are the fixing place for the bolted cover (Accessory 8).



### 3 Functions, Settings Description



● Temperature	Display range : -4.0 ~ 302.0 °F, Display unit : 0.1 °F
● Temperature warning	Setting range : 140 ~ 302 °F, Setting unit : 1 °F
● Volt meter	Display range : 8.0 v ~ 18.0 v , Display unit : 0.1 v
● Effective voltage	DC 12V
● Effective temperature range	-10 ~ 60 °C
● Water-Proof Standard	JIS D 0203
● Meter size	W69.8 X L34.4 X H17.2 mm
● Meter weight	About 47.5 g

**NOTE** Design and specifications are subject to change without notice!

### 4-1 Display Switching Instruction



- In the temperature display screen, **press the button once** to enter the voltage screen.

- When not connected to the Temp sensor, the screen will show ---.°F °



- When the temperature > temperature warning value, the value will blink.



- In the voltage screen, **press the button once** to enter the Max. temperature record screen.

- When the voltage  $\leq 11.5$  V, the value will blink.



- When the voltage  $\geq 15.5$  V, the value will blink.



- In the Max. temperature record screen, **press the button once** to go back to the temperature display screen.

- **Press and hold the button for 3 seconds** to reset the Max. temperature record and return temperature display screen.



- Back to temperature display screen.

### 4-2 Brightness Switching Instruction



- In the temperature display screen, **press and hold the button for 3 seconds** to switch brightness.



**NOTE** Setting range : Full brightness, half brightness.  
Default value : Full brightness

### 4-3 Temperature Warning Settings



- In temperature display screen, **press and hold the button for 6 seconds** to enter the temperature warning settings screen.



- Example : To set the temperature warning settings to 185 °C.
- Press and hold the button for 3 seconds to move to the digit you want to set.

**NOTE** Setting range : 140 ~ 302 °F  
Default value : 194 °F



- Press the button once to choose the setting number.



- EX : Set temperature warning value from 194 °F to 185 °F.
- Press and hold the button for 3 seconds to go back to the temperature display screen.

**NOTE** If no operation is made within 5 seconds, the setting will be automatically recorded and the screen will return to the temperature display screen.



- Back to temperature display screen.

### 5 Trouble Shooting

The following situation does not necessary indicate malfunction of the device. Please check the following points, before taking it in for maintenance.

Trouble	Check item	Trouble	Check item
Meter does not display or display error.	● Maybe poor connection of the sensor. → Make sure the sensor is connected correctly.	Temperature does not display or display error.	● Maybe poor connection of the harness. → Make sure the wires are connected correctly.

