



## Custom Dynamics® Magic Strobes™ Brake Flasher Installation Instructions

We thank you for purchasing the Custom Dynamics® Magic Strobes™ Brake Light Flasher! Our products utilize the latest technology and high quality components to ensure you the most reliable service. We offer one of the best warranty programs in the industry and we back our products with excellent customer support, if you have questions before or during installation of this product please call Custom Dynamics® at 1(800) 382-1388.

**Part Number: MAGIC-STROBES-SCOUT**

### Package Contents:

- Magic Strobes™ Brake Flasher (1)
- Tie-Wraps (10)

**Fitment:** 2015-2022 Indian Scout & Scout Sixty (Does NOT fit Scout Bobber models)

1. Secure motorcycle on level surface and remove the seat.
2. Disconnect negative [ - ] battery cable from the battery.
3. Locate and unplug the rear lighting harness connectors under the fender, behind the license plate as shown in Picture 1.



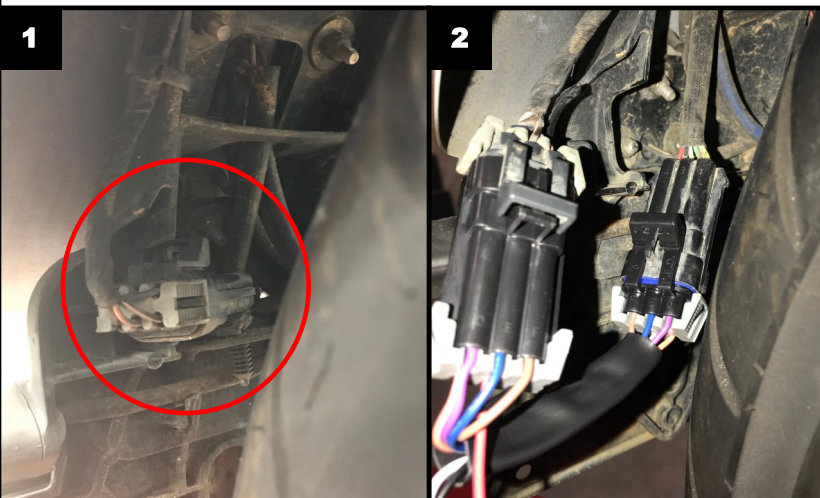
# ATTENTION

Please read all Information below before Installation

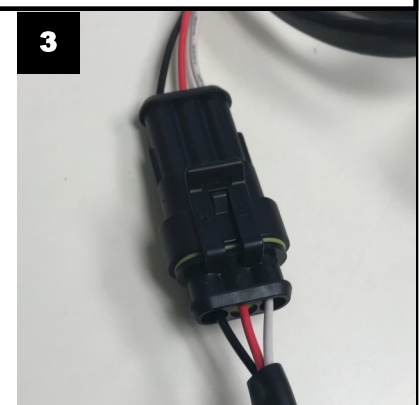
**Important:** Module must be secured after installation. Find safe area away from any moving parts and out of the way of normal operation of the bike. Use the enclosed tie-wraps to secure. Custom Dynamics® is not liable for damage as a result of improperly securing or failing to secure the module.

**Caution:** A stuck brake switch may cause this unit to over-heat and fail. Unplug module immediately if this condition occurs.

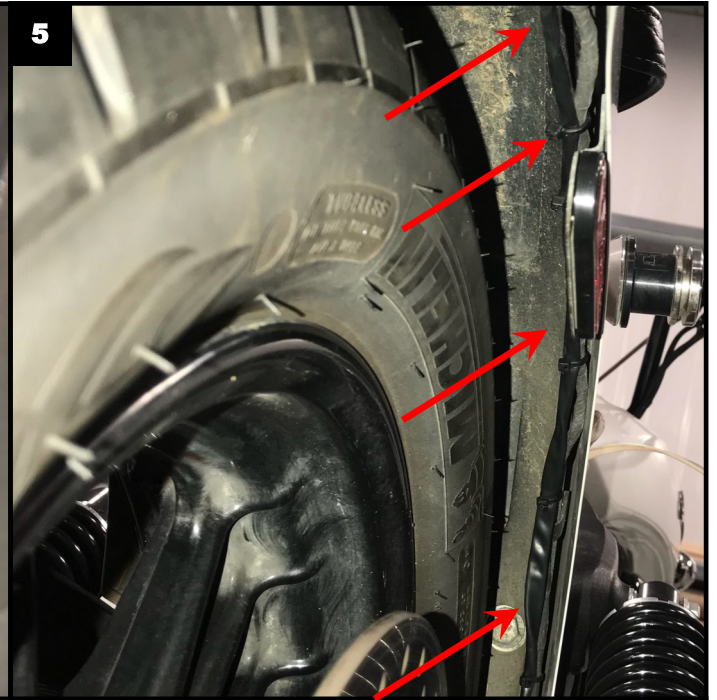
**Note:** Although this device has been designed to significantly increase your braking visibility, flash/strobe patterns may not be street legal in your area.



4. Plug the Magic Strobes™ module harness, in-line, into the rear lighting harness connectors as shown in Picture 2.
5. Disconnect the Magic Strobes™ module from the wiring harness by disconnecting the wiring harness connectors shown in Picture 3.
6. Secure the Magic Strobes™ module harness and connectors to the fender to insure they will not come in contact with the rear tire as shown in Picture 4.
7. Continue securing the Magic Strobes™ wiring harness to the bikes rear lighting harness, under the fender, to the bottom right side of the battery compartment as shown in Picture 5.



Questions? Call us at: 1 (800) 382-1388 M-TH 8:30AM-5:30PM / FR 9:30AM-5:30PM EST



8. Route the Magic Strobes™ harness into the bottom right side of the battery compartment and up to the top of the battery compartment. We recommend using a pull wire or large wire tie to help route the harness up through the battery compartment. As shown in Picture 6, we inserted a large wire tie down through the battery compartment, taped the harness connector to the wire tie and pulled the wiring harness up to the top of the battery compartment.
9. Re-connect the wiring harness to the Magic Strobes™ module that was disconnected in Step 5 and shown in Picture 3.
10. Re-connect the battery's negative battery cable to the negative [ - ] of the battery.
11. Select Desired Pattern on the dial with power Off. (See page 3 for Pattern Information)
12. Check Operation by pressing the brake.
13. To change pattern, turn bike OFF and change dial to desired pattern.
14. Mount the Magic Strobes™ as shown in Picture 7. Secure with tie-wraps, double sided tape or other means to insure the unit cannot move.
15. Reinstall seat.



# Installation Instructions - Page 3

## Flash Pattern Information

Pattern 5: Quad Strobe, Solid for 1 Second, then Quad Strobe, Solid for 3 Seconds, then Repeat

Pattern 4: Quad Strobe then Solid for 1 Second then Quad Strobe

Pattern 6: Blaster X Pattern for 3 seconds, then Solid

Pattern 3: Seven Flashes, Solid for 3 Seconds, Repeat

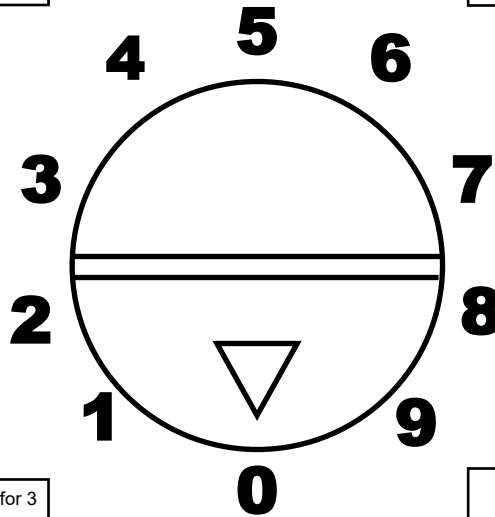
Pattern 7: Constant Blaster X Pattern

Pattern 2: Seven Flashes then Solid

Pattern 8: Constant Fast Strobe 5 Seconds, then Solid

Pattern 1: Four Flashes, Solid for 3 Seconds, Repeat

Pattern 9: No Strobe Pattern



Pattern 0: Four Flashes then Solid

**Important:** Dial should be maneuvered by hand only. Do not use any tool such as a screwdriver that could damage the waterproof cover.

